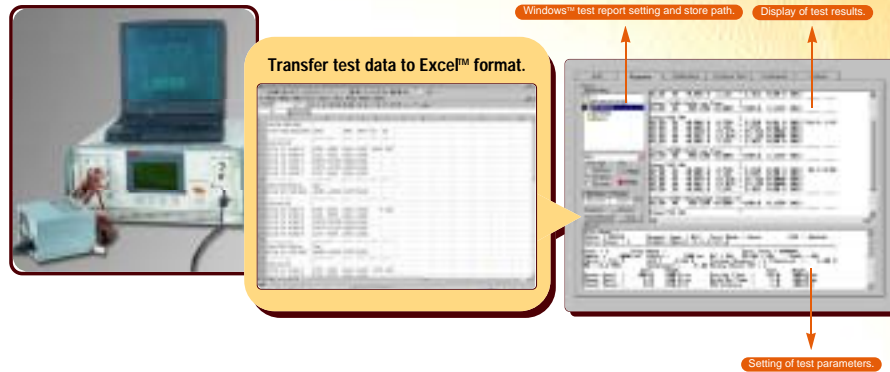


Test reports are Excel™ compatible and can be edited for custom test report format requirements.



3660A Specification

Electronic Load :

Load	1	2	3	4	5	6
Input Rating	300W	180W	20W	40W	120W	20W
Power						
Current	0-60A	0-20A	0-4A	0-4A	0-40A	0-4A
Voltage	0~+30V		0~-30V		0~+10V	0~+30V
CC Mode	0-60A	0-20A	0-4A	0-4A	0-40A	0-4A
Accuracy	±0.5% of (Setting + Range)					
CR Mode	0.05-200Ω	0.15-600Ω	0.75-3000Ω		0.075-300Ω	0.75-3000Ω
Accuracy	±0.8% of (Setting + Range)					
DVM	0~+30V		0~-30V		0~+10V	0~+30V
Accuracy	±0.05% of (Reading + Range)					
DAM	0.00-60.00A	0.00-20.00A	0.000-4.000A	0.00-40.00A	0.000-4.000A	
Accuracy	±0.5% of (Reading + Range)					
PARD @ 0.220MHz	0.000-0.500Vp-p Res. 1mV					
Accuracy	± (2% of Reading + 5mV)					
Protection Testing						
OVP Voltage Source	0~24V@4A					
Accuracy	±0.2% of (Reading + Range)					
Over Current Test	80A @ 1 Min	30A @ 1 Min	6A @ 1 Min	80A @ 1 Min	6A @ 1 Min	6A @ 1 Min
Short Circuit Test	Electronic+Relay					
	0.055Ω/0Ω	0.08Ω/0Ω	0.4Ω/0Ω	0.02Ω/0Ω	0.4Ω/0Ω	

Remark: For ATX, Power Supply, Load 1: for +5V, Load 2: for +12V, Load 3 : for -5V, Load 4 : for -12V, Load 5 : for +3.3V, Load 6 : for +5Vbs

General :

AC Power : 115/230Vac ± 10%
AC Source Input : 115 / 230Vac
Weight : 24Kg
Dimensions : 483(W)x177(H)x445(D)mm

Accessories :

Power Cord : 2 pcs
9860A Application Software : 1 pc
Operation Manual : 1 pc

Isolated AC Source (Built-in ultra fast current breaker)

Output Voltage	800VA, 50/60Hz (Isolated)
115V @7Arms	90, 115, 132 V
230V@3.5Arms	90, 115, 132, 180, 230, 264V
AC Voltage Meter	0.0 - 300.0 Vrms
Accuracy	±0.3% of (Reading + Range)
AC Current Meter	0.00 - 8.00 Arms
Accuracy	±0.5% of (Reading + Range)
AC Power Meter	0.00 - 800.00 W
Accuracy	±0.5% of (Reading + Range)

Timing measurement and control

Pok Power Good / Fail Time	0-9999 mS	
Set-up / Hold-up Time	0-9999 mS	
Accuracy	±1ms	
Threshold Voltage	Vth	VPGS
Input Range	0-30V	0-5.6V
Setting Range	0-30.00V	0-5.60V
Auto/Step Testing Time		
Tmeas.1 - Tmeas.32	500.0 mS - 20 Sec	
Tdelay.1 - delay.32	0.0 mS - 60 Sec	

Order Information :

3660A : ATX Six Output Power Supply Tester
3660A-XX : Custom 3660A
Custom load requirements for loads 2 through 6 can not exceed a combined total of 680W.

(Serial numbers will be assigned according to custom specifications.)

Options :

9906 Integrated Twin Test Fixture
Testing Fixture
Universal Test Fixture
9932 : Remote Interface Key Pad
(File \ START, STOP)



9932



Prodigit Electronics

4F., No. 10, Alley 59, Lane 42, Min-chuan Rd., Hsin-tien, Taipei,
Taiwan, R.O.C.

TEL: 886-2-29182620

FAX: 886-2-29129870

Data Subject to Change without Notice

THE POWER MANAGEMENT SOLUTION COMPANY

3660A Stand-Alone Automatic Multiple Output Power Supply Tester



The Complete Solution for Testing ATX, PS/2,
and Power Supplies With Up To Six outputs

Test Functions :

1. Hold-On Adjust
2. Load Regulation
3. Line Regulation
4. Combined Regulation
5. Efficiency
6. Short
7. P-P Noise (PARD)
8. Power Good / Fail
9. Set-Up / Hold-Up Time
10. OVP (optional)
11. OCP
12. POK, PS ON

Features :

Utilizes The Latest In Electronic Calibration Technology
Quick Set-Up Time
Large, Easy To Read LCD Display
User Friendly Software (Windows™ and Excel™ Compatible)
25% Faster Testing (As compared with integrated systems using GPIB.)
Upload and Download Test Programs Using Your PC
Stores Up To 24 Test Programs

www.prodigit.com



3660A Stand-Alone Automatic Multiple Output Power Supply Tester

Features

The 3660A is an all-in-one stand-alone unit with built-in hardware and software for all testing requirements.

Up to 24 test programs can be edited on a PC with Prodigit's 9860A Application Software (Windows™ version) and downloaded to and stored in the 3660A built-in EEROM for quick access.

Power supply (U.U.T.) information including part number, test requirements and results is shown on the large LCD display. This information can be printed out directly or stored in a PC. Test information can be converted to Excel™ to meet your format requirements.

Testing can be done either automatically or in a step-by-step mode. Automatic testing is typically used for high throughput testing applications. Step-by-step testing is used for checking test settings or U.U.T. functions.

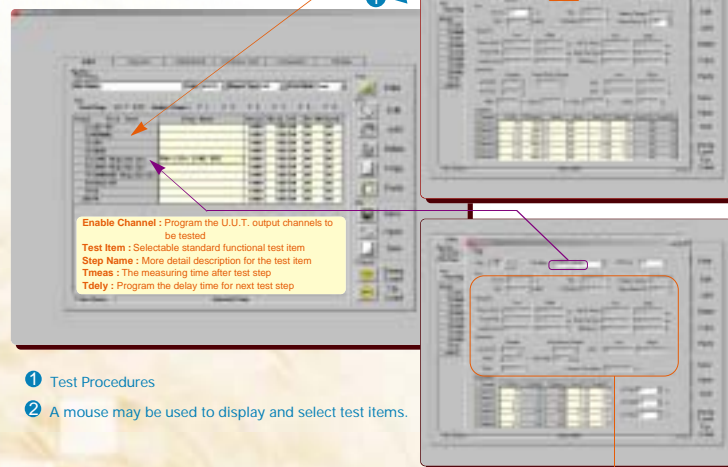
The optional 9906 Integrated Twin Test Fixture (with built-in OVP Source) is designed for high volume production testing.

User friendly 9860A software is compatible with Windows™ and Excel™.

9860A Application Software

Prodigit's 9860A Windows™ and Excel™ compatible software is stored in FLASH memory and allows editing of test parameters, uploading, downloading and printing of test data. 3660A operation system upgrades and multi password protection.

Standard Windows™ display allows for selection of test items.



1 Test Procedures

2 A mouse may be used to display and select test items.

Applications

Prodigit's 3660A Automatic Power Supply Tester is well suited for electronic component inspection, R&D, and production testing of power supplies used in notebooks, desktops, scanners, printers, and many other electronic products.

Windows™ version 9860A software provides custom operation interface that edits test programs and provides multi password protection.

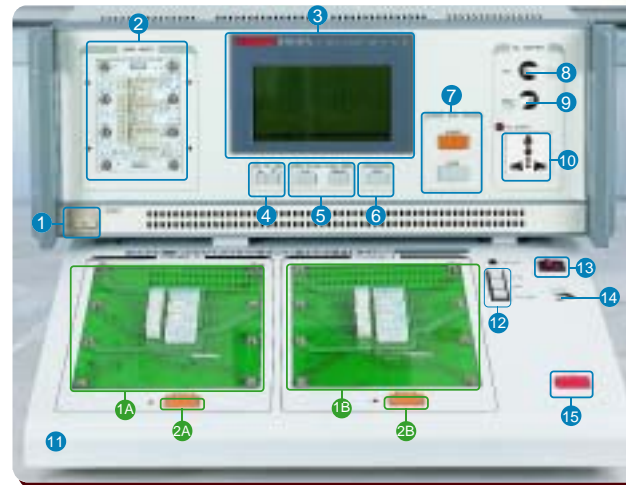
The 3660A has a built-in EEROM to store test programs and a large LCD display to show the PASS/FAIL function of the U.U.T. Test data can be printed out directly without using a computer or can be downloaded to a PC.

3660A has built-in AC source that not need to have external AC source so as to do Line Regulation test.

The optional 9906 Integrated Twin Test Fixture was designed for production applications. It integrates a dual U.U.T. fixture, START/STOP control key, PASS/TESTING/FAIL indicator and FAIL alert with adjustable volume. The dual test fixture allows continual testing which increases throughput volume. One unit will be testing while the user removes a tested unit and replaces it with a new unit to be tested.

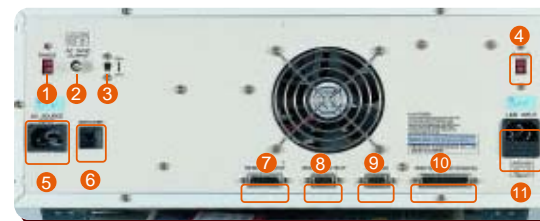
Control and Interconnect Layout

Front Panels of 3660A and 9906 (Integrated Twin Test Fixture)



- | | |
|---|---|
| 1 3660A Power Switch | 8 The selectable 90, 115, and 132V AC source output control switch is equipped with an ultra fast current breaker. |
| 2 Load Fixture Assembly Board | 9 The selectable 180, 230, and 264V AC source output control switch is equipped with an ultra fast current breaker. |
| 3 Large LCD screen displays test parameters and test results. | 10 AC Source Output Connector |
| 4 Test File Selection Key (scroll keys) | 11 9906 Integrated Twin Testing Fixture (With built-in OVP source.) |
| 5 Test Results Selection Key Print: Select either printer or RS232 mode.
Report: 1. (ALL) Results of all test data.
2. (ERR) Fail data.
3. (OFF) Display disabled. | 12 Test Status Indicator |
| 6 Test Function Selection Key Mode: Select either auto or manual (step-by-step) testing. | 13 9906 Twin Test Fixture Power Switch |
| 7 Test Control Switches (START) Begin Testing (STOP) End Testing | 14 Fail Alert Volume Control |
| | 15 Stop Test Switch |
| | 1A 1B (U.U.T. Output) Test Fixture Connector |
| | 2A 2B Start Test Key |

3660A Rear Panel



- | | |
|---|---|
| 1 AC Source Line Voltage Selection Switch (115V/230V) | 7 Remote Input Port (Start, Stop, File Select) |
| 2 AC Sync Signal Output | 8 Test Status Output Port (Testing, Pass, Fail) |
| 3 AC Source Frequency Switch (50Hz/60Hz) | 9 RS232 Port (For uploading and downloading test programs and data to PC) |
| 4 3660A Line Voltage Selection Switch (115V/230V) | 10 Printer Connect Port |
| 5 AC Source Input | 11 3660A AC Input Connector |
| 6 Auto AC Current Breaker | |



Results of PASS/FAIL testing are displayed on the LCD Panel.



Test report data can be printed directly via the printer port.



The optional integrated Twin Testing Fixture increases throughput volume.